

Case Study: Climate Ready Clyde (Scotland)

The Climate Ready Clyde initiative is widely heralded as one of Europe's leading examples of place-based adaptation action – read on to find out how the initiative developed from an idea to a major adaptation initiative.



Background

Climate Ready Clyde is the leading initiative working to ensure Glasgow City Region is able to adapt to the challenges of our changing climate, and for everyone to benefit from this transformation. It is funded by 14 member organisations – including the eight local authorities and supported by the Scottish Government. This is a collaborative partnership and has been widely recognised for its ambition to drive a truly transformational approach to adapting to climate change. Climate Ready Clyde, together with its partners is creating the conditions for a regional transformation, building the collective evidence base and capacity, and has produced Glasgow City Region's first Adaptation Strategy and Action Plan to make it happen.



Aerial View of Glasgow City



Spotlight on Influence & Empowerment

The first iteration of the Climate Ready Clyde vision was developed in 2012 as part of early-stage workshops run by the Adaptation Scotland programme to explore the need for partnership work to adapt to climate change in Glasgow City Region. The vision was finalised, endorsed by regional partners and launched by the leader of Glasgow City Council in 2013/2014. It was used to help communicate the need for joint action on adaptation and contributed to building the business case for Climate Ready Clyde to be established. The vision was updated in 2019/2020 following publication of the Climate Ready Clyde Climate Risk and Opportunity Assessment. Partners built on

the original vision by developing a detailed Theory of Change through the Clyde Re:built project. The Theory of Change sets out a long-term vision for a climate ready Glasgow City Region, the change process required to achieve the vision and guiding principles. It was used to guide the development of the region's Adaptation Strategy and Action Plan, published in 2021. Prof James Curran MBE was appointed the first Chair of Climate Ready Clyde in 2017. Prof Curran provided outstanding senior leadership support and championed Climate Ready Clyde through development of the first climate risk and opportunity assessment, and the Climate Change Adaptation Strategy and Action Plan for Glasgow City Region. Under Prof Curran's

leadership the initiative reviewed Governance arrangements during 2021/2022 and has now implemented a new phase with a stronger focus on distributed leadership. You can hear Prof Curran speak on the topic of leadership [here](#).

Prof Curran completed his

term as Climate Ready Clyde Chair in 2022 and will continue as an Ambassador for the initiative. Dr Roddy Yarr, Executive Lead Sustainability at the University of Strathclyde is the first convenor of the newly established Action Group. Find out more about the new phase of Climate Ready Clyde leadership [here](#).



Participants at the Climate Ready Clyde Conference



Spotlight on Co-developing and maintaining the evidence base & Monitoring and evaluation

The Climate Ready Clyde initiative developed a climate risk and opportunity assessment for the Glasgow City Region during 2016 – 2018. The assessment was led by the Climate Ready Clyde secretariat based within sustainability charity [Sniffer](#). The secretariat designed an innovative and inclusive assessment process that drew on the assessment method developed for the second UK Climate Change Risk Assessment and involved extensive review and synthesis of evidence and feedback provided by regional partners. An assessment of economic risks and opportunities was included as an integral part of the evidence base. The climate risk and opportunity [assessment](#) was published in 2018 and used to inform development of the adaptation strategy and action plan that followed.

The Climate Ready Clyde initiative has continued to build the evidence base for action supported by very strong research and practice collaborations including as part of the [Clyde Re:built](#) project which

focused on system change and transformational adaptation, [COACCH – Co-designing the Assessment Of Climate Change costs](#) and [OpenCLIM](#) (Open Climate Impacts Modelling Framework).



Place based priorities for climate adaptation in Glasgow City region



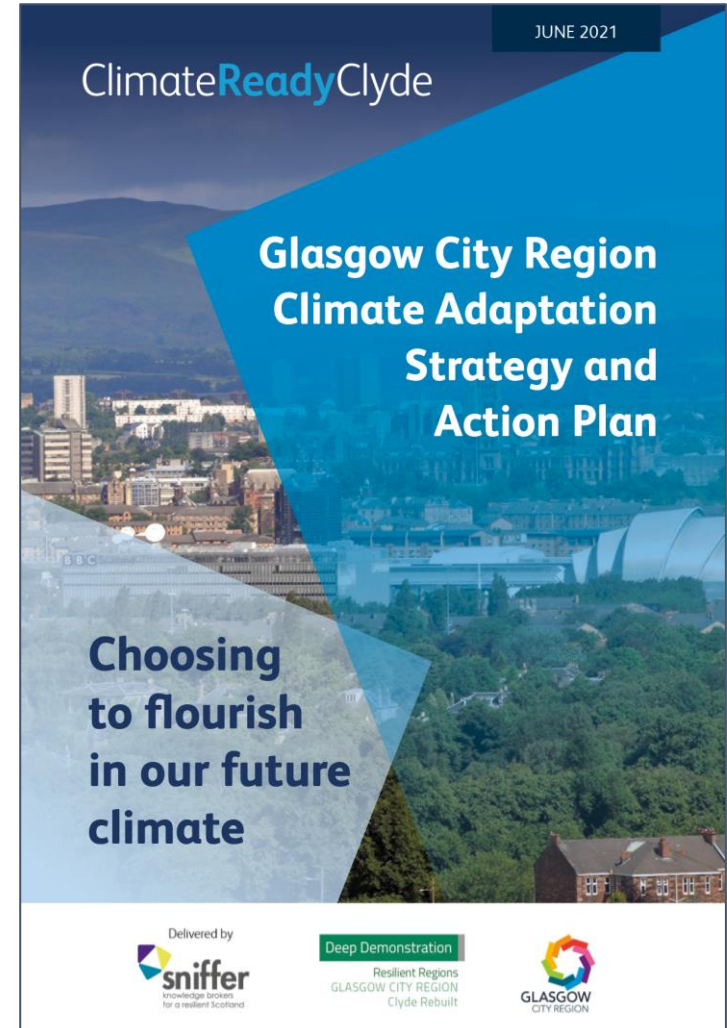
Spotlight on Funding & People

The Climate Ready Clyde partners co-fund the secretariat, based within sustainability charity Sniffer, to lead an ambitious programme of work, and empower partners and wider stakeholders to take action to adapt to climate change. By jointly funding the secretariat partners have benefited from producing a shared regional climate risk and opportunity assessment, saved 13 partner organisations around £500,000 in avoided staff and consultancy costs. It also enabled partners to leverage in the region of £200,000 of additional expertise from research projects. The Glasgow City Region Adaptation Strategy and Action Plan includes

detailed economic and financial analysis and business cases for a selection of portfolio of actions which, if delivered in combination have the potential to catalyse a transformational approach to climate change adaptation. Read the portfolio blueprint here. The Strategy and Action Plan was heavily informed by the Clyde Re:Built project which brought together specialists in innovation, economics and finance, governance and culture.



A view of Glasgow city



Glasgow City Region Adaptation Strategy



Spotlight on Collaboration & Building strong governance and supporting structures

Climate Ready Clyde was the first multi-partner, collaborative adaptation initiative in Scotland. The initiative started through a series of exploratory workshops in 2011 that created space for diverse partners to talk and think about how climate change was influencing their city region and come to a consensus on how the challenge should be addressed. There was overwhelming agreement from around 40 organisations that a partnership approach to climate adaptation was needed for the city region. In the years that followed partners have worked together to build awareness of the need to adapt to climate change, successfully built the business case for forming and resourcing the initiative and co-developed a regional risk and opportunity assessment and a transformational adaptation strategy and action plan. The initiative is now focused on delivering an ambitious portfolio of

strategic interventions and flagship actions that it is hoped will help drive system change and transformation. There is strong recognition from Climate Ready Clyde that climate change adaptation should not be addressed as a separate, standalone issue in Glasgow City Region and that work to adapt to climate change should respond to the root causes of climate risks which are linked to systemic inequalities. The initiative has sought to unpack the concept of transformative adaptation and identify interventions that can influence and catalyse system change. Read more about their thinking on transformative adaptation [here](#).

Find Out More

Visit the Website at:

<https://www.climatereadyclyde.org.uk>

Email at:

climatereadyclyde@sniffer.org.uk



@ClimaReadyClyde



Participants at a CRC Conference



The North Basin of the Glasgow City Region

The TaIX project is funded under the EPA Research Programme 2014-2020. The EPA Research Programme is a Government of Ireland initiative funded by the Department of the Environment, Climate and Communications.

