

Just Adaptation and Indigenous Peoples



Land is life, Water is blood.



Our Good Health
and well-being.
Our women hold
the knowledge
of herbal
medicine, sea
animals, and
plants.



Our food
sovereignty
and food
security.

Spiritual and
identity.
Relation of
nature,
human, and
supernatural.



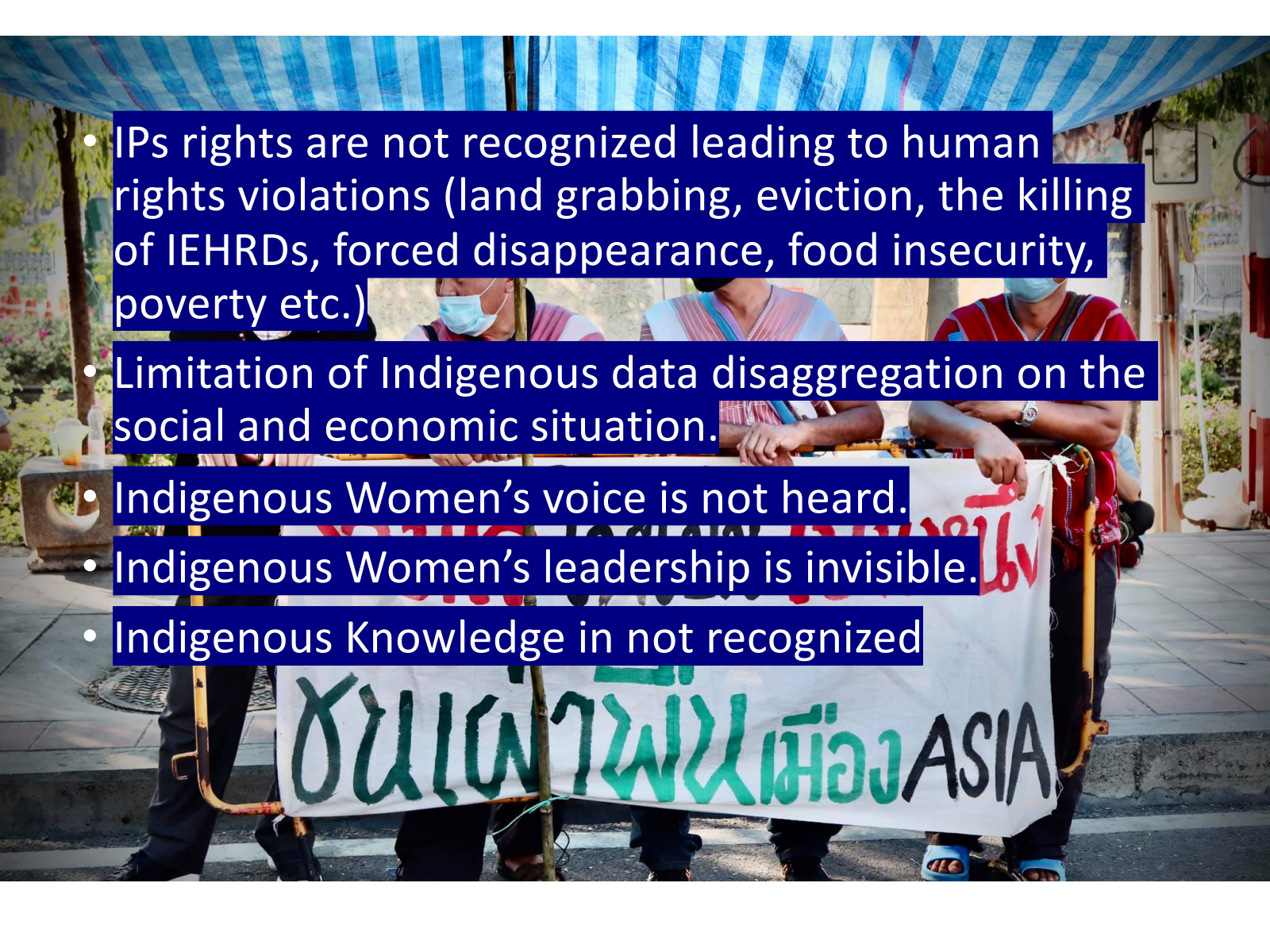
School of
life: Learning
space for our
own people
and outsiders.



Overview of IPs in Asia

- **2/3 of IPs live in Asia**
- **representing 2,000 distinct civilizations and languages**
- **Only 5 countries in Asia recognized Indigenous Peoples**



- 
- IPs rights are not recognized leading to human rights violations (land grabbing, eviction, the killing of IEHRDs, forced disappearance, food insecurity, poverty etc.)
 - Limitation of Indigenous data disaggregation on the social and economic situation.
 - Indigenous Women's voice is not heard.
 - Indigenous Women's leadership is invisible.
 - Indigenous Knowledge is not recognized

ASIA

Fire Management/Forest Monitoring

- Fire break 6 Kilometers
- Forest monitoring 26 Kilometers
- Community Fund





Seeds diversity

**Knowledge
Holder**

Food Security



Recommendation

Recognize the rights of Indigenous Peoples

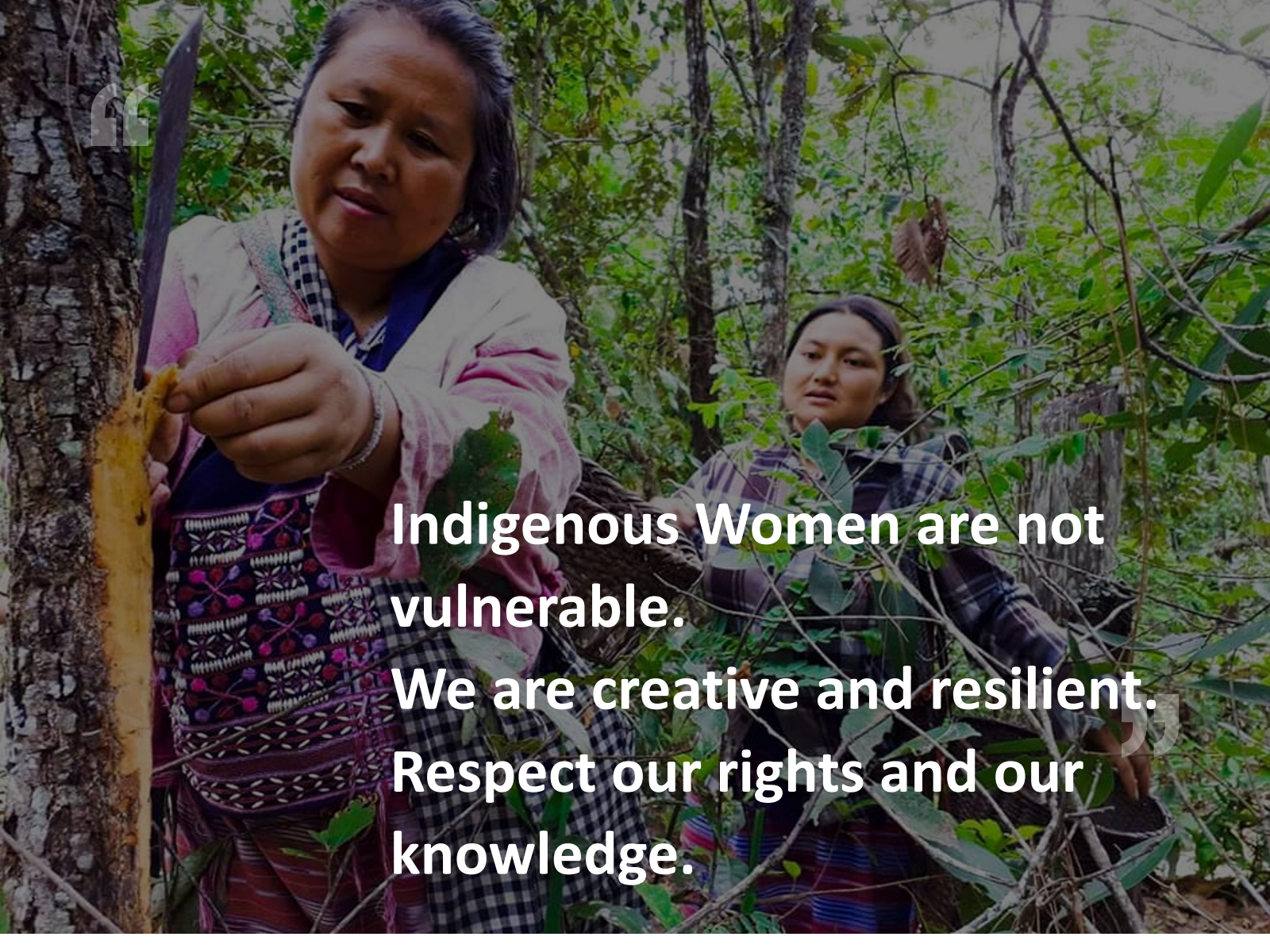
Partnership with IPs /IPs lead adaptation

Direct Funding,

IPs data/indicator,

- **Decision making, effective participation (all processes and all levels)**
- **Full and effective participation.**
- **Capacity building,**
- **Documentation-info sharing,**
- **Gender Responsive**






**Indigenous Women are not
vulnerable.
We are creative and resilient.
Respect our rights and our
knowledge.**

Framing "Just Resilience" in a globalised world - what do we need to get there?

Frida Lager, Stockholm Environment Institute
27 September 2023



**Adaptation
Without
Borders**

An aerial photograph of a river valley. The river is a vibrant green, winding through a valley floor. The surrounding mountains are rugged and colored in shades of brown, tan, and purple, suggesting a high-altitude or semi-arid environment. The river's path is highlighted by a dark, winding line.

Just transitions and adaptation in a globally connected world

“Perhaps the most significant lesson brought by these last twelve months has been that we are no longer separate nations, each best served by looking after its own needs and security.

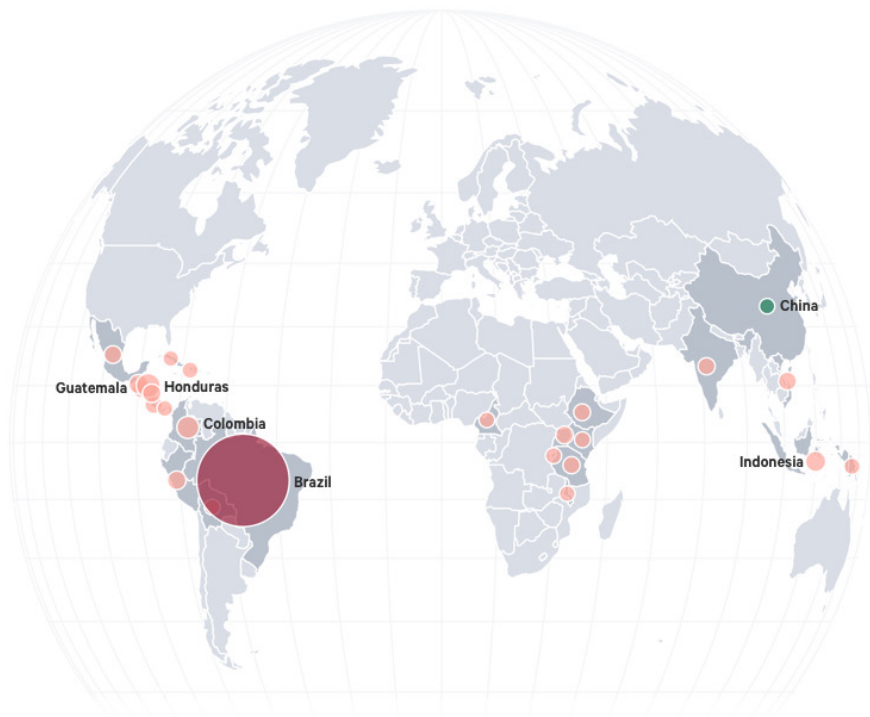
We are a single, truly global species, whose greatest threats are shared and whose security must ultimately come from acting together, in the interests of us all”

Sir David Attenborough



Top Global Risk Exporters for Coffee Arabica

Visualising the top exporters of climate change risk for global coffee *arabica* trade.



#	EXPORTER	TOTAL SHARE OF GLOBAL RISK (%)	TOTAL EXPORTS (60KG BAGS)	IMPACT OF CLIMATE CHANGE ON PRODUCTION
1	Brazil		23407k	-63.7%
2	Honduras		3125k	-62.8%
3	Colombia		9522k	-21.9%
4	Indonesia		1117k	-35.7%
5	Guatemala		3804k	-34.5%
6	Peru		3635k	-24.5%
7	Nicaragua		1318k	-74.2%
8	Viet Nam		261k	-52.5%
9	Costa Rica		1728k	-43.9%
10	El Salvador		1119k	-76.3%
11	Uganda		610k	-58.6%
12	Mexico		1976k	-43.9%
13	India		933k	-18.5%
14	Tanzania		548k	-52.0%
15	Ethiopia		3359k	-9.2%
16	PNG		1023k	-16.6%
17	Haiti		627k	-60.8%
18	Burundi		1203k	-28.7%
19	Kenya		717k	-12.8%
20	Panama		85k	-53.6%
21	Bolivia		142k	-60.1%
22	Cuba		200k	-78.5%
23	Cameroon		84k	-80.6%
24	Malawi		28k	-65.3%
...
1	China		546k	2.2%

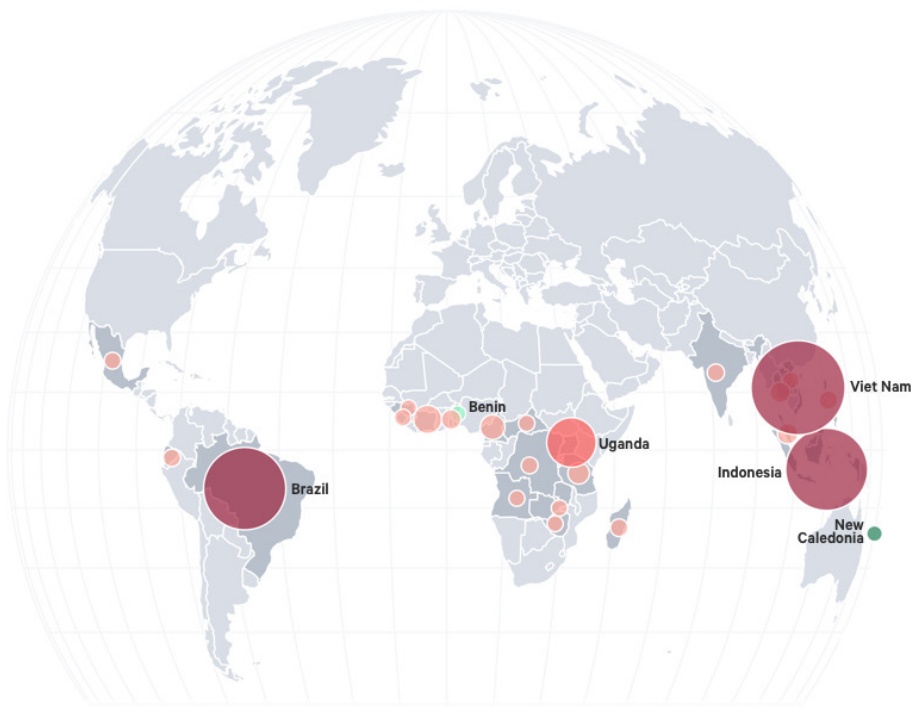
1560:1 RISK TO OPPORTUNITY RATIO

3.7 TOTAL GLOBAL FLOW MN TONNES


-45.2% IMPACT OF CLIMATE CHANGE ON PRODUCTION

Top Global Risk Exporters for Coffee Robusta


Visualising the top exporters of climate change risk for global coffee *robusta* trade.



#	EXPORTER	TOTAL SHARE OF GLOBAL RISK (%)	TOTAL EXPORTS (60KG BAGS)	IMPACT OF CLIMATE CHANGE ON PRODUCTION
1	Viet Nam	██████████	8434k	-26.0%
2	Brazil	██████████	6992k	-19.0%
3	Indonesia	██████████	6330k	-21.6%
4	Uganda	██████████	2442k	-32.9%
5	Côte d'Ivoire	██████████	1662k	-32.0%
6	Cameroon	██████████	561k	-47.5%
7	Tanzania	██████████	413k	-24.5%
8	Thailand	██████████	428k	-25.7%
9	Malaysia	██████████	239k	-26.3%
10	Togo	██████████	131k	-19.2%
11	Philippines	██████████	267k	-24.8%
12	Madagascar	██████████	290k	-15.6%
13	Ecuador	██████████	85k	-26.3%
14	India	██████████	2077k	-1.2%
15	DRC	██████████	320k	-51.7%
16	Sierra Leone	██████████	436k	-36.6%
17	Mexico	██████████	104k	-23.0%
18	Laos	██████████	67k	-31.5%
19	CAR	██████████	99k	-49.8%
20	Zambia	██████████	19k	-13.5%
21	Zimbabwe	██████████	8k	-12.5%
22	Guinea	██████████	18k	-30.3%
23	Angola	██████████	161k	-26.7%
...
2	Benin	██████████	<1K	3.4%
1	New Caledonia	██████████	<1K	20.4%

 **336772:1** RISK TO OPPORTUNITY RATIO

 **1.9** TOTAL GLOBAL FLOW MN TONNES

 **-23.5%** IMPACT OF CLIMATE CHANGE ON PRODUCTION

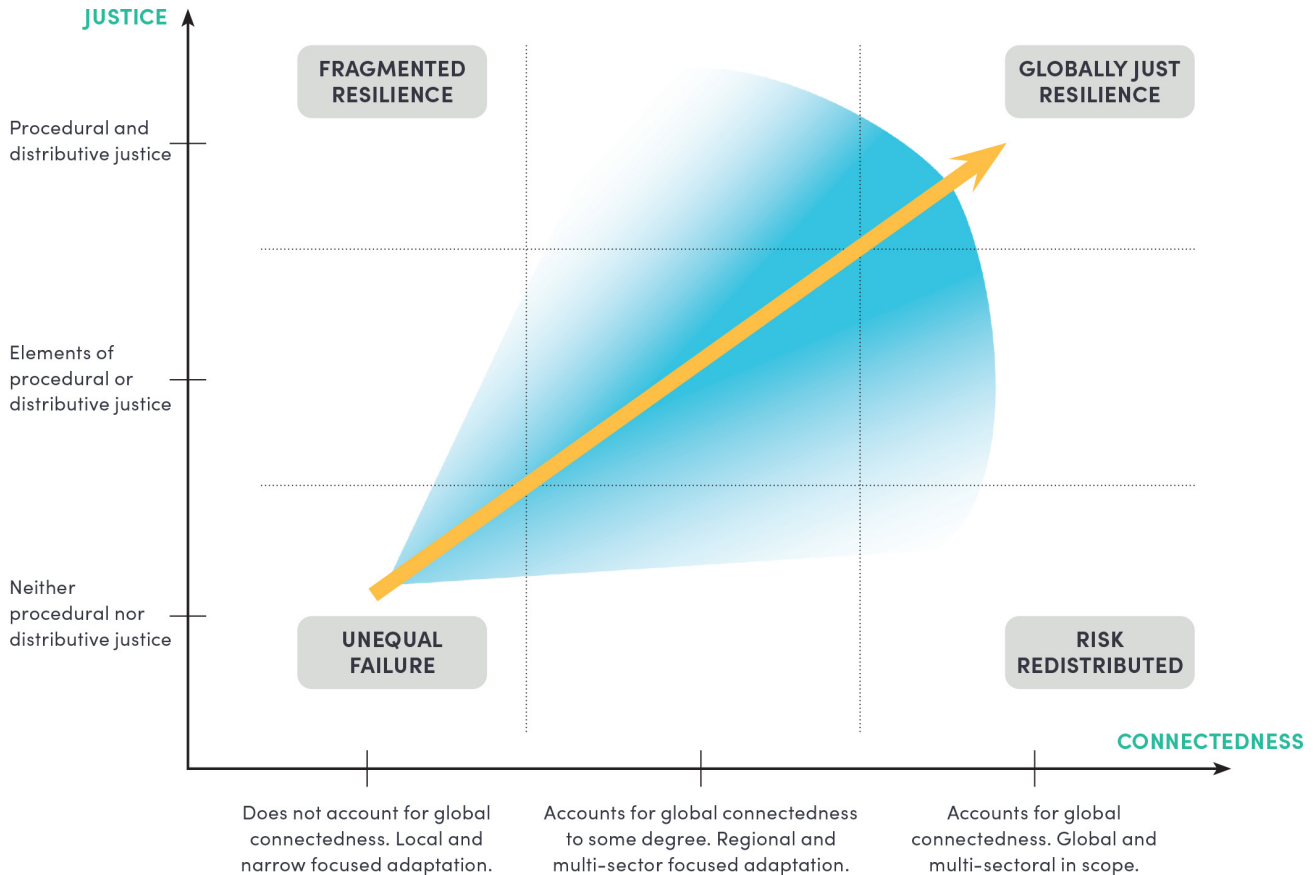
The farmer's perspective

- 80% of coffee farmers globally are smallholders: < 5 hectares
- Declining yields/loss of income
- Loss of livelihoods
- "Abandonment"



Framework for a Globally Just Resilience

The yellow arrow shows the movement of just transition for adaptation in a globally connected world within the framework



Moving from ambition to action: Developing agreed principles for the road ahead

- Actively encourage adaptation;
- Avoid the creation of adaptation “losers” or redistributing climate risk;
- Provide international support for vulnerable regions and communities;
- Support people and communities who are negatively affected by adaptation measures;
- Reduce climate risk and distribute the burdens of adaptation fairly, ensuring that risk is not transferred from the private to the public sector;
- Address existing global inequalities, including the distribution of climate risk;
- Ensure that a planning process is both inclusive and transparent.



Thank you!

Contact: Frida.lager@sei.org



**Adaptation
Without
Borders**

The role online knowledge spaces can play in supporting “just adaptation”

Sharing and learning from adaptation successes and lessons
(not failures!)

Sukaina Bharwani
weADAPT Coordinator



Photo credit: Damian Patkowski



Climate change adaptation planning, research and practice.

weADAPT is a collaborative platform on climate change adaptation issues. It allows practitioners, researchers and policy-makers to access credible, high-quality information and connect with one another.

weADAPT.org



Designing user-driven climate services
This publication outlines the iterative design approach for smart climate services in the African highlands and the design of services.



Learn

Explore and learn about current and exciting climate adaptation work, methods and tools.



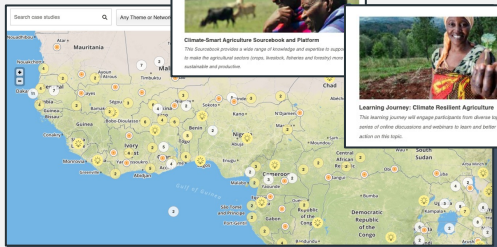
Share

Share your climate adaptation work through the platform, and increase your visibility.



Connect

Connect and discuss with other climate adaptation professionals and organisations.



Climate-Smart Agriculture Sourcebook and Platform
This Sourcebook provides a wide range of knowledge and expertise to assist in using the agricultural sector (crop, livestock, forestry and technology) more sustainably and productively.



Learning Journey: Climate Resilient Agriculture
This learning journey will engage participants from diverse topical backgrounds in a series of online discussions and webinars to learn and better contribute and gain action on the topic.



Toolkit

Toolkit for a Gender-Responsive Process to Formulate and Implement National Adaptation Plans (NAPs): Supplement to the UNFCCC Technical Guidelines for the NAP Process

Submitted by Claire Harrison Austin | published 05 Aug 2011 | last updated 17th Dec 2011

Introduction
The impacts of climate change are not gender-neutral. Exacerbating inequalities between men and women, women of the most vulnerable are the most exposed to the adverse effects of climate change.

Ask the community
Check the Terms and the Impact on the Topic

Theme
National Adaptation Planning & Implementation
Climate Change Adaptation

Contributors
Lynne Davis
Lynne Davis, National Adaptation Planning & Implementation

Take a look
National Adaptation Planning & Implementation

Featured Download
Toolkit for a Gender-Responsive Process to Formulate and Implement National Adaptation Plans

An Online Sourcebook: Integrating Gender in Climate Change Adaptation Proposals

Submitted by Aida Romero | published 05 Aug 2011 | last updated 17th Dec 2011

Introduction
We require climate change adaptation plans, actions, studies and other documents on the local, national, regional and international levels. For this reason we developed this online sourcebook. This is a practical guide and manual for climate change adaptation professionals to assist in adapting to a changing climate. You can find it by your region.

Ask the community
Check the Terms and the Impact on the Topic

Theme
Gender and Social Equity in Climate Change Adaptation
Climate Change Adaptation

Contributors
An Online Sourcebook: Integrating Gender in Climate Change Adaptation Proposals
Aida Romero

Featured Download
An Online Sourcebook: Integrating Gender in Climate Change Adaptation Proposals



6 Generations of Knowledge Management

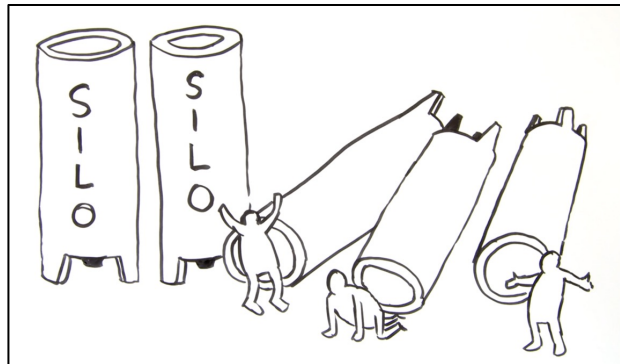
1: ICT-Based	2: Organization-based	3: Knowledge sharing-based	4: Practice-based	5: Development knowledge system/ecology	6. Decolonization of knowledge
Identifying concepts					
Knowledge as a commodity	Knowledge as an asset within organizations	Knowledge sharing between organizations	Knowledge process embedded in organizational processes	Cross-domain knowledge integration and knowledge co-creation	'We have a dream' - common aspirations for a fairer development knowledge system/ecology
Features					
<ul style="list-style-type: none"> • ICTs • Databases • Portals • Clearinghouses 	<ul style="list-style-type: none"> • KM audits • KM scans • Explicit and tacit knowledge 	<ul style="list-style-type: none"> • Peer assist • Case studies • 'Best practices' • Inter-organization communities of practice 	<ul style="list-style-type: none"> • Role of social media • People-centric • Practice-based 	<ul style="list-style-type: none"> • Multiple knowledges • Multi-stakeholder processes • Global public good and knowledge commons • Emphasis on local knowledge • Emergence and complexity 	<ul style="list-style-type: none"> • Epistemic justice • Anti-racism • Indigenous and local knowledge (ILK) • Diversity in KM approaches • New knowledge partnerships • New knowledge practices

Source: Boyes et al., 2023, adapted from Cummings et al., 2018.



Knowledge barriers to achieving "just adaptation"

Information overload: Leads to confusion, replication and redundancy



weADAPT vision:

To accelerate learning, collaboration and climate action

Are We Doing Things Right?

People

Search

Search



Nacanieli Speigth

Masters in Environmental Sciences, Policy and Management (MESPOM) Student at CEU

[View Profile](#)



Voahirana Claudia Randriamamony

Project Leader at Madagasikara Voakajy

[View Profile](#)



Mohamadou Habibou Gabou

Director of environment at Ministry of Environment and Sustainable Development of Niger

[View Profile](#)



Russell Galt

Mobile Journalist at MoJo Velo

[View Profile](#)



ERIC ADUMA

Climate Change Expert at UN-Habitat

[View Profile](#)



Christian Ledwell

Program Manager, NAP Global Network at IISD

[View Profile](#)



Jana Junghardt

Senior Advisor Disaster Risk Reduction at Caritas Switzerland

[View Profile](#)



Shirinagha Samim

Head of Resilience and disasters unit at UNEP Afghanistan

[View Profile](#)



Dosteus Lopa

Programme Manager at CARE

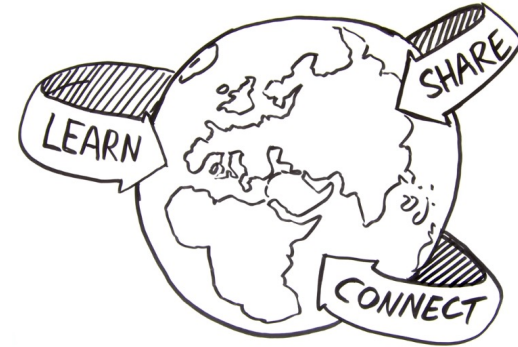
[View Profile](#)



Bethany Garfield

Graduate Student at New Orleans Hurricane Resource

[View Profile](#)



7000+ members



1500+ organizations



1800+ articles



700+ case studies



~4000 LinkedIn followers



7000+ X followers

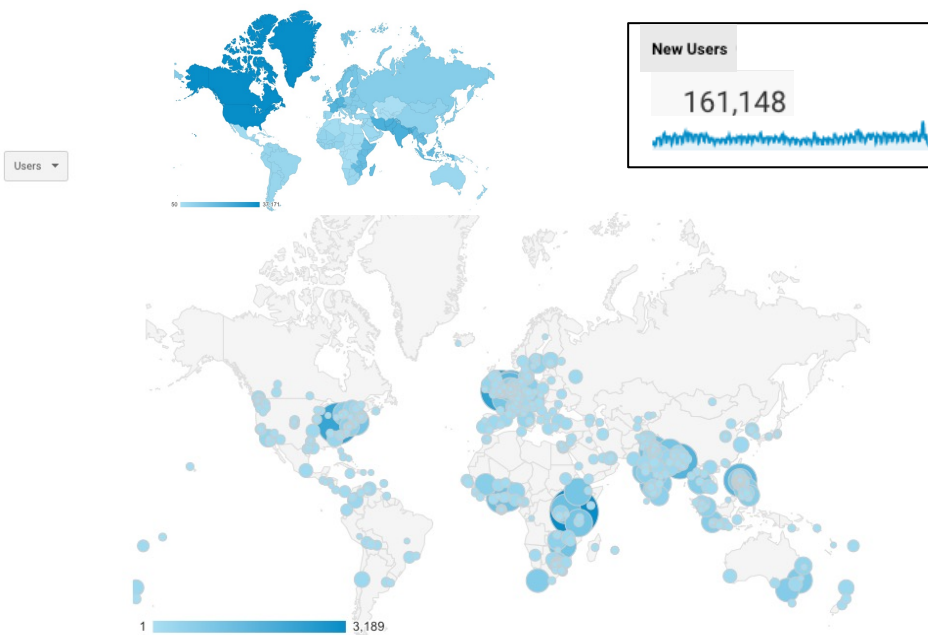


4000+ Facebook followers

160,000+ unique site visits in 2022

10,000+ newsletter readers

Global reach in 2022



1. India	1. Nairobi
2. Netherlands	2. London
3. Philippines	3. Columbus
4. United Kingdom	4. Amsterdam
5. Czechia	5. Dhaka
6. Canada	6. Quezon City
7. Seychelles	7. The Hague
8. Germany	8. Kampala
9. Kenya	9. Accra
10. China	10. Bengaluru
11. Australia	11. Delhi
12. Bangladesh	12. Lagos
13. South Africa	13. Harare
14. France	14. New York
15. Indonesia	15. Kathmandu
16. Ethiopia	16. Addis Ababa
17. Russia	17. Dar es Salaam
18. Nigeria	18. Paris
19. Italy	19. Mumbai
20. Nepal	20. Sydney

Primary Dimension: Country City Continent Sub Continent

Search Map 🔍 ↗

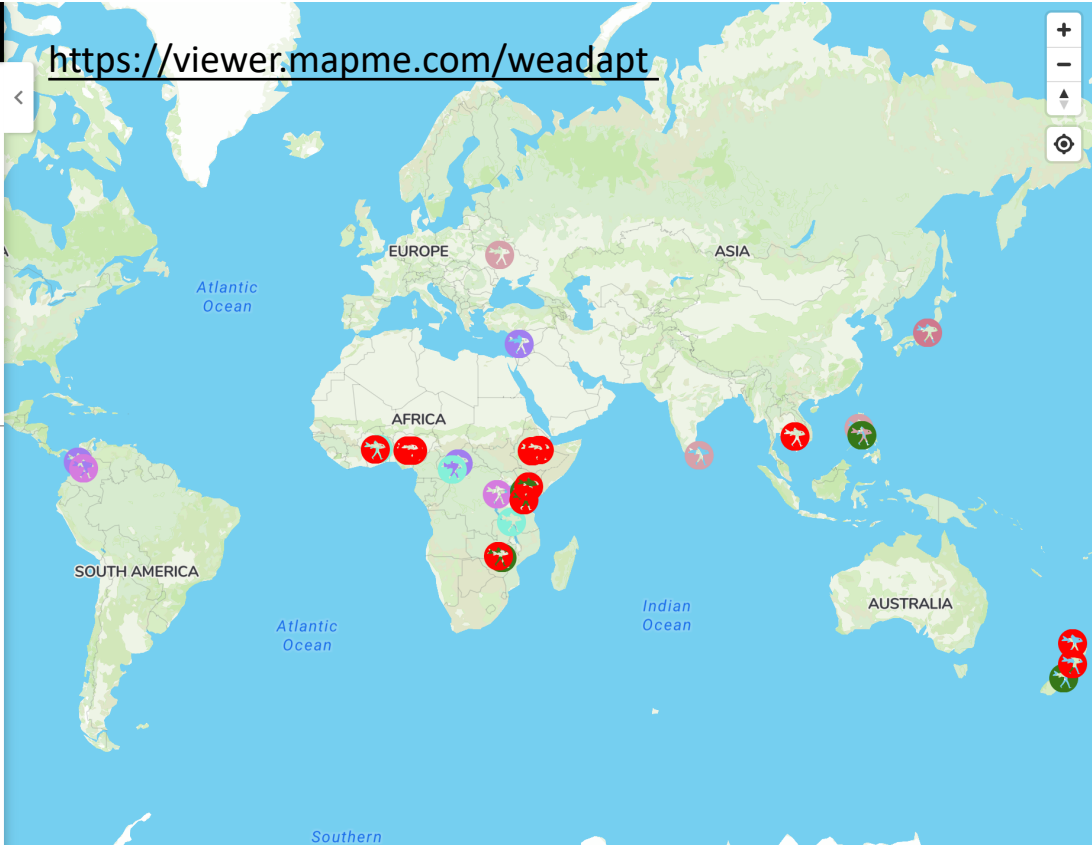


How people are using weADAPT

Click on a pin to hear stories about how weADAPT is being used.
Share your story with info@weADAPT.org.

- ⬆
- Raising awareness 11
- Enhancing capacity development 10
- Planning and implementation 13
- Linking science and policy 10
- Creating connections 3
- Learning from cases 17
- Facilitating knowledge exchange 5
- Inspiring other platforms 1

<https://viewer.mapme.com/weadapt>



Are We Doing the Right Things?



How Do We Know What The Right Things Are?

Interviews highlight that, amongst other things, weADAPT is:

- Raising awareness and promoting adaptation practice
- Developing capacity and supporting training
- Supporting planning and implementation
- Fostering new connections and knowledge exchange

Raising awareness

“we use weADAPT case studies as examples of how local areas have adapted or how they have participated in processes to resolve issues, because people are always looking for practical examples”.

- **Consultant, Cambodia**

“Because of weADAPT, I had that passion of trying to see what my country is doing and how the climate change is affecting farmers as well.”

- **A meteorologist in Botswana**



Raising awareness

Photo credit: Boudewijn Huysmans

Developing capacity and supporting training

*In a "Science Village" in Nigeria, a **community leader** used ideas from weADAPT to implement specific training programs for **youth, farmers and women who had been displaced.***

*An environmental organization in Zimbabwe has brought weADAPT knowledge to **local farmers, training lead farmers** on several agricultural practices, like the use of drought-tolerant crops, who will then train others.*



Enhancing capacity development




Photo credit: Muhammad Nasir

Planning and implementation: Learning from cases

"It as a source for me for information, on what other people in other corners of the world are doing. And of course, the best examples, the best practices that are being implemented."

- A programme manager at the UN Multidimensional Integrated Stabilization Mission in the Central African Republic

 Planning and implementation

 Learning from cases

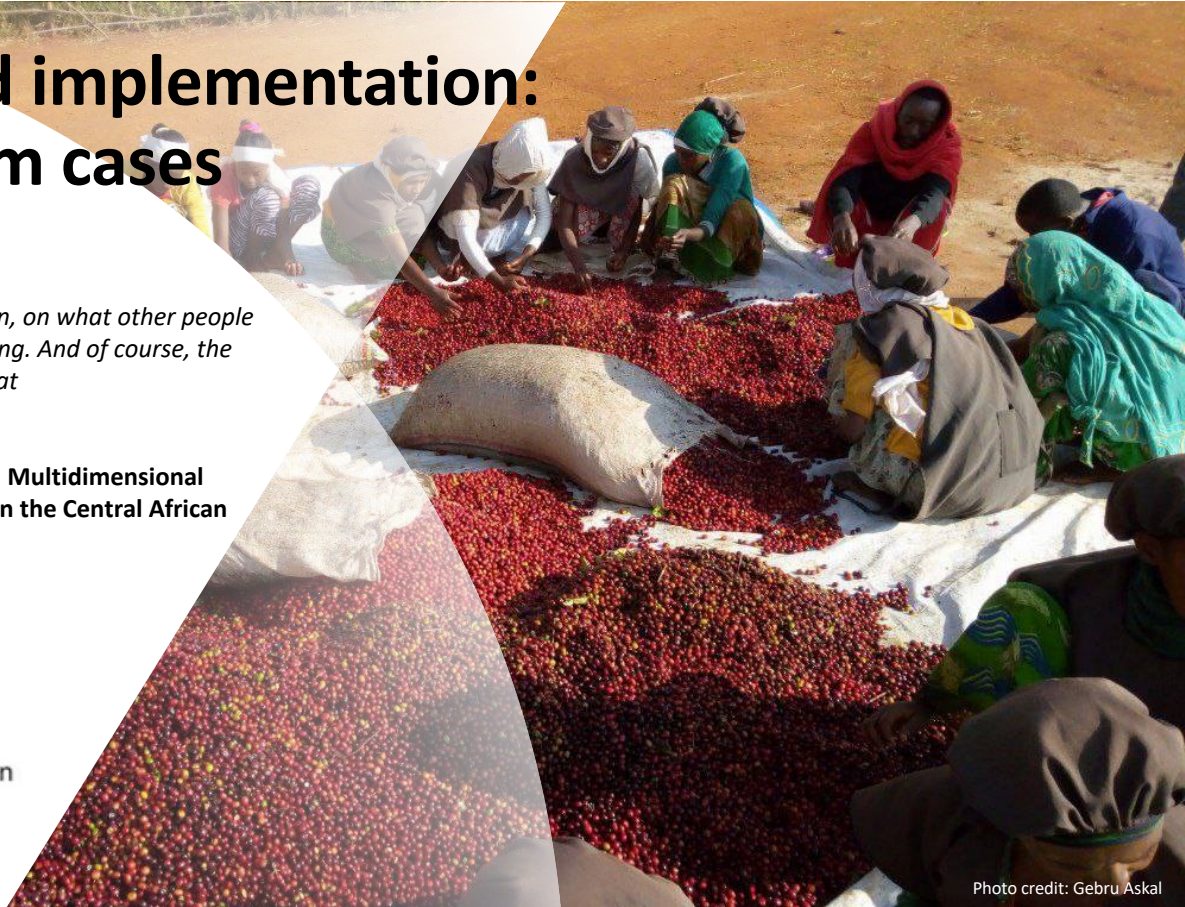


Photo credit: Gebru Askal

Fostering Connections

Developing partnership networks

"A Community Climate Change Adaptation Assessment [...] was to be done in five countries of the Lake Victoria district, which are Rwanda, Burundi, Tanzania, Kenya and Uganda [...] we needed at least one organization working on climate change in each country [...] So [weADAPT is] how I came across to find all these organizations working on climate change and we partnered to carry out this this assessment."

- Researcher in Rwanda



Creating connections

Photo credit: Robin Noguier

What contributes to this? weADAPT core values

1. Improving access and connectivity to knowledge
2. Using accessible language and synthesizing material for a non-technical audience
3. Promoting equitable knowledge sharing and valuing multiple knowledge types
4. Sharing knowledge that is trusted, timely and relevant
5. Keeping a local to global focus, with inclusive and diverse content
6. Easy to use, enhancing search and discovery of relevant knowledge

weADAPT core values

1. Improving access and connectivity to knowledge
2. Using accessible language and synthesizing material for a non-technical audience
3. Promoting equitable knowledge sharing and valuing multiple knowledge types
4. Sharing knowledge that is trusted, timely and relevant
5. Keeping a local to global focus, with inclusive and diverse content
6. Easy to use, enhancing search and discovery of relevant knowledge

Improving access and connectivity to knowledge

Hard to reach audiences

*In Nigeria, to bypass existing network connectivity issues, a **community leader** regularly prints the **weADAPT** newsletter and takes it to the local **library** to increase the accessibility of this global knowledge within his community.*

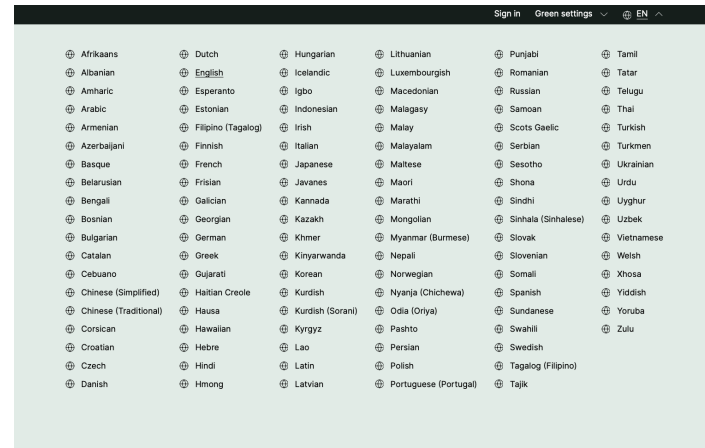
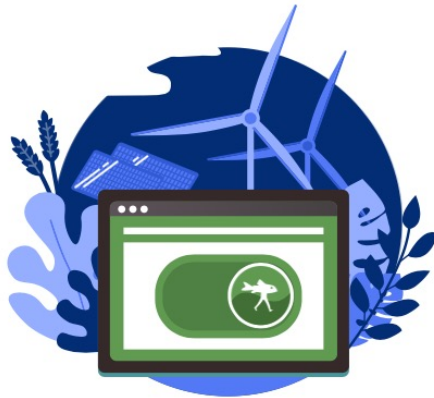


Facilitating knowledge exchange

Photo credit: Muhammad Nasir

What we will do to improve access and connectivity

- Green design
- Accessibility
- Including over 100 languages
- Making more of the site accessible offline



weADAPT core values

1. Improving access and connectivity to knowledge
2. Using accessible language and synthesizing material for a non-technical audience
3. Promoting equitable knowledge sharing and valuing multiple knowledge types
4. Sharing knowledge that is trusted, timely and relevant
5. Keeping a local to global focus, with inclusive and diverse content
6. Easy to use, enhancing search and discovery of relevant knowledge

Newsletter

Integrating ecosystem-based adaptation and integrated water resources management for climate-resilient water management

Added to the Ecosystem-based Adaptation Theme by Esther Dossardier and Ash



This study explores how ecosystem-based adaptation and water resources management can be merged to achieve greater climate resilience in watersheds.

[Read the complete Article on wAdAPT](#)

Climate Risk in Africa: Adaptation and Resilience

Added to the Adaptation Decision Making Theme by Katharine Vincent, Anna Alice McCune, Rosalind Cornforth, Anna Taylor and Soraja Ayeb-Karson



This book highlights the complexities around making adaptive decisions and building resilience in the face of climate risk, a insights from sub-Saharan Africa.

[Read the complete Article on wAdAPT](#)

A review of mental health and wellbeing under climate change in small island developing states (SIDS)

Added to the Small Islands and Climate Change Theme by Ian Kaitiaki and by Karlsson



This paper reviews research about mental health and wellbeing climate change in small island developing states (SIDS).

[Read the complete Article on wAdAPT](#)

Online course: Gender, environment and sustainable development

Added to the Climate Adaptation Training Theme by Rajesh Datta, Bernadette Reumertson, He Nyugen and Angeles Lertioso



Gender is considered a key variable of power inequality. This course helps you better understand gender in environmental sustainable development.

[Read the complete Article on wAdAPT](#)

Co-designing climate services to support adaptive natural hazards: two case studies from Sweden

Added to the Using Climate Information Theme by Karin Arndik, Linn-Jeremias Gerger Swearing



Drawing on two Swedish case studies, this brief aims to show how the co-design of climate services can support adaptive and decision-making.

[Read the complete Article on wAdAPT](#)

Building Resilience With Nature: Ecosystem-based Adaptation in National Adaptation Plan Processes

Added to the National Adaptation Planning Theme by Anika Tarton from IISD



This analysis highlights the extent of integration and identification of ecosystems and EBA into NAPs, trends in how EBA was incorporated, and aspects that were limited in scope.

[Read the complete Article on wAdAPT](#)

Transformative adaptation of rivers in an urban context: An ecological infrastructure and socio-ecological toolkit

Added to the Urban Adaptation to Climate Change Theme by Mark Graham and Jessy Appavoo



Ecological infrastructure plays an important role in the overall health of rivers. This toolkit supports users to design, plan, implement and finance ecological infrastructure.

[Read the complete Article on wAdAPT](#)

Community-Managed Water Supply System and Rainwater Harvesting Facility

Added to the Community Based Adaptation (CBA) Theme by Helen Jeans, Marino Gonzalez, Jose-Alejandro Gonzalez, Sharon Taylor and Rinaud Flores



This case study describes how community members of Barangay San Julian have taken collective action to address water scarcity through the establishment of a community-managed water system and rainwater harvesting facility.

[Read the complete Case Study on wAdAPT](#)

Gobernanza participativa y gestión del riesgo ante incendios forestales en el Perú

Added to the SDG Climate Change & Environment (CC&E) Network by Miquel Brotons from HELVETAS



Este blog presenta aprendizajes en la gestión de riesgo de los incendios forestales en la región de Apurímac, Perú.

[Read the complete Article on wAdAPT](#)

Strategic Communications in Peru's National Adaptation Plan (NAP) Process

Added to the National Adaptation Planning Theme by Christian Ledwith, Daniel Monahan and Victor Santillan



This brief highlights a selection of communications activities and good practices that the Peruvian Ministry of Environment has undertaken to support national adaptation planning and action.

[Read the complete Case Study on wAdAPT](#)

Pamoja Voices climate-resilience planning toolkit for rural communities

Added to the Climate Adaptation Training Theme by David-Paul Pertsch and Sam Greene



This toolkit, developed by IISD, Bwalandi, Hakikazi Catalyst and the Pastoralist Women's Council in Northern Tanzania supports inclusive climate-resilient planning for rural communities.

[Read the complete Article on wAdAPT](#)

Research for Impact MOOC by the University of Cape Town and Oxfam

Added to the Climate Adaptation Training Theme by Mark New and Jesse DeMarzo-Kinney



Online training for Research and Development Professionals about the Research for Impact approach - principles and practices that will make your research more impactful.

[Read the complete Article on wAdAPT](#)

SENSES Toolkit for Climate Change Adaptation

Added to the Climate Adaptation Training Theme by Henrik Carsten from SEI



The SENSES Toolkit, developed in the EC SENSES project, offers a range of modules for finance, policy and regional decision makers to learn about and explore climate change scenarios.

[Read the complete Article on wAdAPT](#)

Participate! – an online course on how to better facilitate events on climate change adaptation and disaster risk reduction

Added to the Climate Adaptation Training Theme by Bettina Koelle, Eddie Wasswa Jemba, Sukana Bhanwarai and Julia Barratt



"Participate!" is a free, interactive, online training module developed by SEI and the Red Cross Climate Centre to support the design of more effective science, policy, and practice events.

[Read the complete Article on wAdAPT](#)

Tandem: online guidance for the co-design of climate services

Added to the Climate Adaptation Training Theme by Liz Daniels and Sukaina Bhanwarai



The Tandem online guidance supports information providers, intermediaries and users to collectively co-design climate services for policy, research and practice.

[Read the complete Article on wAdAPT](#)

Gender in the Andean Forests Landscape: Reflections from the Andean Forests Program

Added to the SDG Climate Change & Environment (CC&E) Network Theme by Natalia Ruiz-Guivara from HELVETAS



This blog shares lessons learned from the identification, recognition, and assessment of local gender roles, functions, and contributions, during the activities of the Andean Forests Programme.

[Read the complete Article on wAdAPT](#)

Alliances for Ecosystem-based Climate Adaptation in Guatemala

Added to the Ecosystem-based Adaptation Theme by Maral El Fassi from TMG Thirstat



This article describes how an ecosystem-based adaptation platform in Guatemala is creating enabling governance conditions for effective climate adaptation, and supporting alliances to help upscale ecosystem-based adaptation.

[Read the complete Article on wAdAPT](#)

The Geopolitics of Food Security: Barriers to the Sustainable Development Goal of Zero Hunger

Added to the Adaptation without Borders - Indirect Impacts of Climate Change Theme by Jay-Zhou, Lisa Detlaff, Kevin Adams, Tiza-Simone Heiser and Nina von Linsow



This paper seeks to give geopolitics a more prominent place in the food security debate, outlining its impact across a range of areas that directly affect food security.

[Read the complete Article on wAdAPT](#)

Cascading Climate Impacts - Policy Simulation

Added to the Adaptation without Borders - Indirect Impacts of Climate Change Theme by Piotr Magdziarski and Lukasz Jankovic



The Cascading Climate Impacts Policy Simulation encourages us to go beyond the linear process in which science is passed on to society after its production by offering a more interactive and productive management between science and science users.

[Read the complete Article on wAdAPT](#)

An introduction to sustainable agriculture practice on suboptimal land

Added to the Synergies between Adaptation and Mitigation Theme by Anissa Neyra Rahmsyari from TUF



Available arable lands are shrinking over time since most of them are already cultivated or converted. This article explores the way to convert suboptimal land into arable land, using an example from Indonesia.

[Read the complete Article on wAdAPT](#)

weADAPT core values

1. Improving access and connectivity to knowledge
2. Using accessible language and synthesizing material for a non-technical audience
3. Promoting equitable knowledge sharing and valuing multiple knowledge types
4. Sharing knowledge that is trusted, timely and relevant
5. Keeping a local to global focus, with inclusive and diverse content
6. Easy to use, enhancing search and discovery of relevant knowledge

Indigenous Knowledge

Carbon Proofing Towards Resilient Mountain Communities - The Eco-village Scheme

Submitted by Monika Sharma | published 6th Mar 2023 | last updated 18th Apr

Introduction

Climate change, forest loss and fragmentation, biodiversity loss, unsustainable agriculture, water pollution, degradation of natural water sources, and solid waste management, water and energy access challenges are key issues of concern in the rural areas of Himachal Pradesh. Eco-village schemes aim to address these issues by implementing environmentally sustainable practices across different sectors at village level.



Hi-Tech Green Houses in Eco-village | credit: Monika Sharma, GIZ

A compilation of good practices, tools and available data collection initiatives for the use of local, indigenous and traditional knowledge and practices for adaptation

Submitted by Sam Wool | published 16th Jan 2018 | last updated 30th Jan 2023

Introduction

Following the recommendations of the Adaptation Committee (AC) in



yes and tools for rate change, the Subsidiary good practices and tools and aring platforms, including

Addressing Indigenous Peoples' Marginalisation at International Climate Negotiations: Adaptation and Resilience at the Margins

Submitted by Claudia Comberti | published 18th Nov 2016 | last updated 12th Dec 2016

Introduction

Indigenous Peoples (IP) are a critical but currently inadequately considered population in the climate change crisis. On the one hand, IP

represent a rich source of local environmental knowledge and adaptability that can significantly contribute to global solutions. On the other hand, IP globally face systemic discrimination and exclusion from political and economic power. This is particularly pertinent at the United Nations international climate change negotiations (UNFCCC) where IP are largely marginalised and their voices dismissed.

To tackle climate change fairly and effectively, the marginalisation of Indigenous Peoples needs to be addressed. This policy brief* proposes actions necessary to right the scales and respect human and Indigenous rights. It is a summary of a more comprehensive working paper, available at <http://ssrn.com/abstract=2870412>

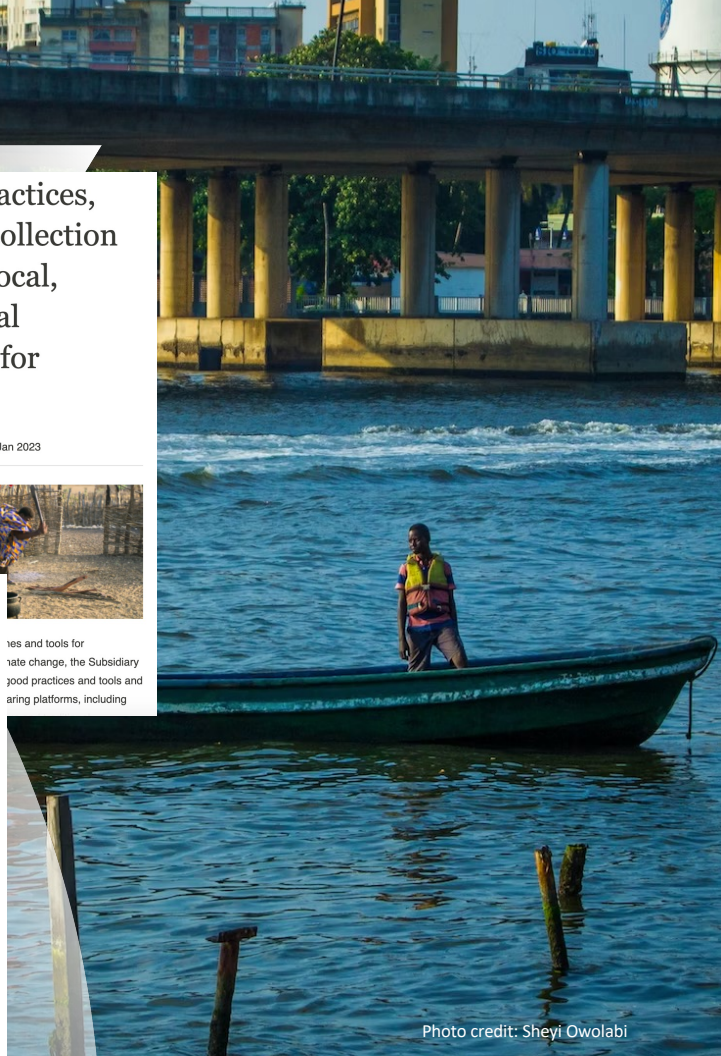


Photo credit: Sheyi Owolabi

weADAPT core values

1. Improving access and connectivity to knowledge
2. Using accessible language and synthesizing material for a non-technical audience
3. Promoting equitable knowledge sharing and valuing multiple knowledge types
4. **Sharing knowledge that is trusted, timely and relevant**
5. Keeping a local to global focus, with inclusive and diverse content
6. Easy to use, enhancing search and discovery of relevant knowledge

Sharing knowledge that is trusted, timely and relevant

“weADAPT allows people with tight schedules to keep up to date: weADAPT content is useful for people who don't have much time to be able to keep up with adaptation issues and topics. It's the learning opportunity from your website, the terminologies and terms and language that's useful for us that don't have enough time.”

- **A technical advisor at the International Institute of Rural Reconstruction (IIRR), Philippines**

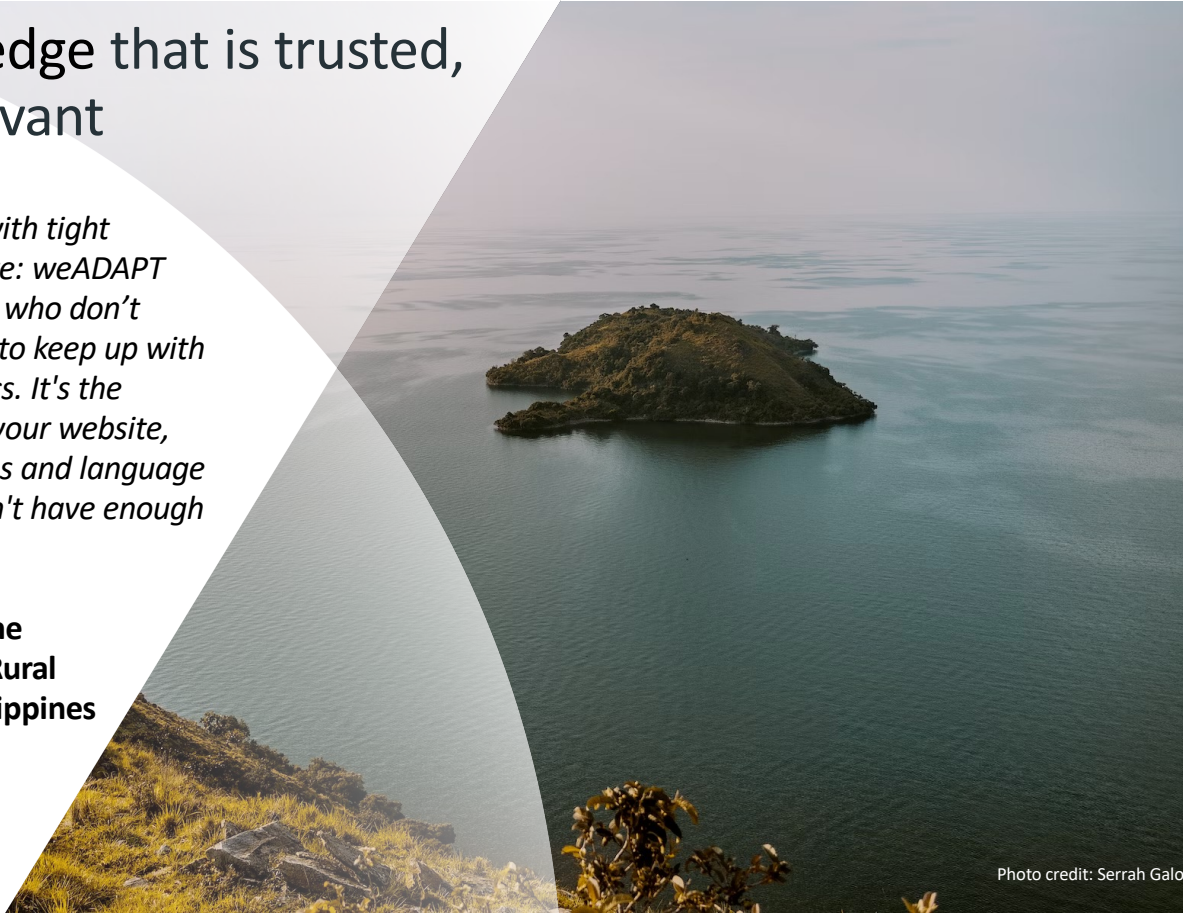


Photo credit: Serrah Galo

weADAPT core values

1. Improving access and connectivity to knowledge
2. Using accessible language and synthesizing material for a non-technical audience
3. Promoting equitable knowledge sharing and valuing multiple knowledge types
4. Sharing knowledge that is trusted, timely and relevant
5. Keeping a local to global focus, with inclusive and diverse content
6. Easy to use, enhancing search and discovery of relevant knowledge



Inspiring adaptation action – global to local

"I frequently visit the website to gather current information on adaptation practices."

"I visited the weADAPT website to come up with a list of adaptation practices and then narrow them down to the East African context. So I used the resource to validate some of the information that I have.....Any new, innovative ways of promoting adaptation!"

**- A programme manager
working with agricultural SME's,
Kenya**

weADAPT core values

1. Improving access and connectivity to knowledge
2. Using accessible language and synthesizing material for a non-technical audience
3. Promoting equitable knowledge sharing and valuing multiple knowledge types
4. Sharing knowledge that is trusted, timely and relevant
5. Keeping a local to global focus, with inclusive and diverse content
6. Easy to use, enhancing search and discovery of relevant knowledge

Easy to use and findable content



“The way you structure the subjects and the themes in the newsletter is very good. It makes it easy for readers to, you know, just browse them and select the ones that are most interested.”

- User in Yemen

“I go across your case studies. I think it is the maps that you have where you nicely plotted all the case studies. So, whenever we are doing any country specific work we go there and check those resources.”

- Senior adaptation specialist, Japan

A more equitable and user-friendly knowledge landscape for all



Learn offline

Download reports and our popular newsletter to read offline



Multi-Lingual

Browse weADAPT in your preferred language, with over 100 to choose from!



Go green

Reduce your energy consumption, switch to dark mode and choose low-quality images



Trending tags

Explore the latest popular topics in the weADAPT community



Bookmark

Bookmark articles to save content to your profile and read later



Follow peers

Follow your peers to hear about their latest activities and publications



Share

Share your publications and project findings to increase the visibility of your work



Connect

Connect with others by finding peers in your area of work or geographic region

"..we learn from your programs and we want the community learn from us"

- A high school teacher in Tanzania

Acknowledgements:

Thanks for collating these insights go to the entire weADAPT team past and present, particularly Kate Williamson, Ruth Butterfield, Hazal Bulut, Francesca Liberatore Vaselli, Ushika Kidd, Maia Arama, Hind Al-Eryani, and all our valued weADAPT interviewees and community members.



Photo credit: Sukaina Bharwani